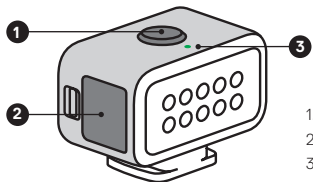


Light Mod

USER GUIDE

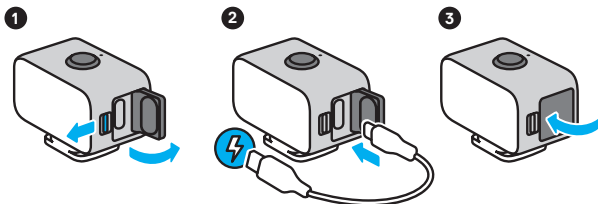


The Basics

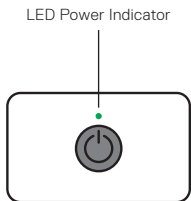


1. Power Button
2. USB-C Door
3. LED Power Indicator

Battery



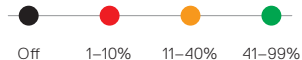
Heads Up: Be sure that the door is locked and waterproof by firmly pressing it shut after charging.



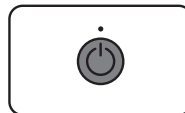
CHARGING


The LED will pulse green when charging and turn off when the battery is fully charged. It takes about 1.5 hours to fully charge the battery.

BATTERY LIFE



Using Your Light Mod




Press  to cycle through the three levels of illumination and the strobe.


	Brightness	Battery Life*
Level 1	20 lumens	6 hours
Level 2	60 lumens	2 hours
Level 3	125 lumens 120 lux @1m	1 hour
Strobe		7 hours

*Battery life may vary based on usage and other external conditions.

OVERDRIVE

Quickly double press  to boost illumination to 200 lumens for 30 seconds.

POWERING OFF

Press and hold .

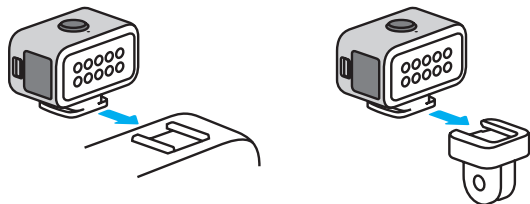
TECH SPECS

Color temperature without diffuser: 5700K.

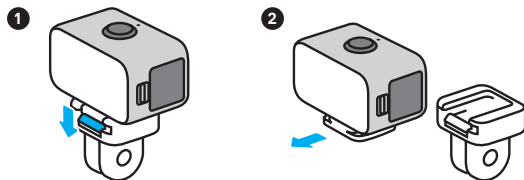
Color temperature with diffuser: 5000K.

CRI: 90+

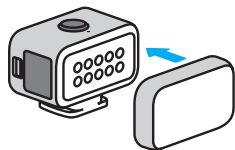
Mounting



Removing the Mount Adapter



Using the Diffuser

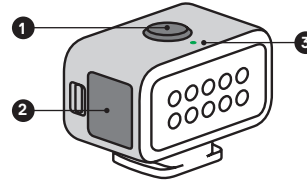


Attach the diffuser to the front of your Light Mod to soften the light.

Module d'éclairage

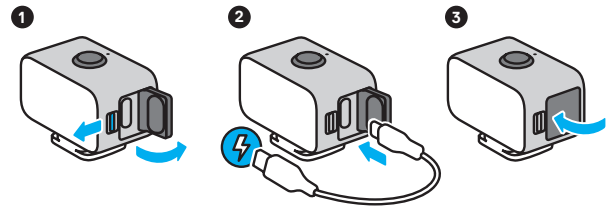
MANUEL DE L'UTILISATEUR

L'essentiel



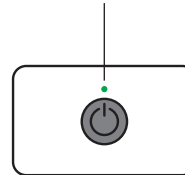
1. Bouton Alimentation
2. Trappe du port USB-C
3. Voyant d'alimentation LED

Batterie



Attention : assurez-vous que la porte est verrouillée et que la fermeture est étanche en appuyant fermement dessus une fois la charge terminée.

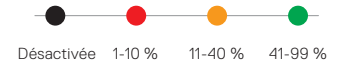
Voyant d'alimentation LED



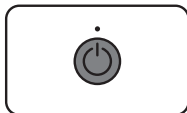
CHARGEMENT


Le voyant LED clignote en vert lors de la charge et s'éteint lorsque la batterie est complètement chargée. Comptez environ 1,5 heure pour charger la batterie à 100 %.

AUTONOMIE DE LA BATTERIE



Utilisation de votre module d'éclairage




Appuyez sur  pour passer en revue les trois options d'éclairage et l'option stroboscope disponibles.

	Luminosité	Autonomie de la batterie*
Niveau 1	20 lumens	6 heures
Niveau 2	60 lumens	2 heures
Niveau 3	125 lumens 120 lux à 1 m	1 heure
Stroboscope		7 heures

*L'autonomie de la batterie peut varier en fonction de l'utilisation et d'autres conditions externes.

SATURATION

Appuyez brièvement deux fois de suite sur  pour passer l'éclairage à 200 lumens pendant 30 secondes.

MISE HORS TENSION

Maintenez  appuyé.

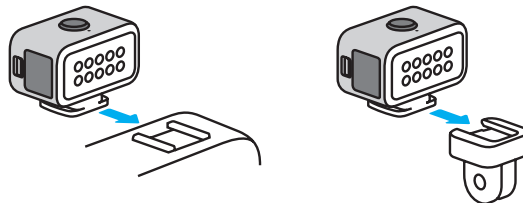
SPÉCIFICATIONS TECHNIQUES

Température de couleur sans diffuseur : 5 700 K.

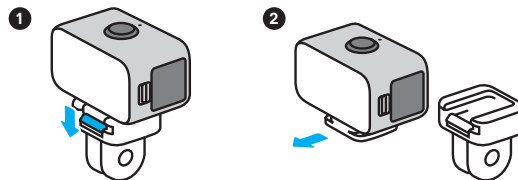
Température de couleur avec diffuseur : 5 000 K.

ICR : 90 minimum

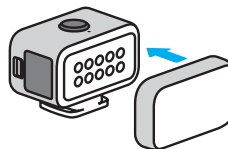
Fixation



Retrait de l'adaptateur de fixation



Utilisation du diffuseur



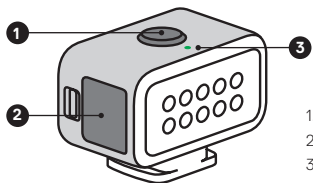
Fixez le diffuseur à l'avant de votre module d'éclairage pour adoucir la lumière.

Light Mod

BENUTZERHANDBUCH

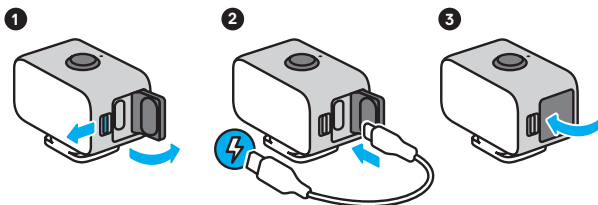


Die Grundlagen



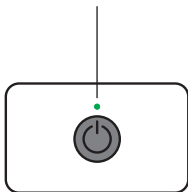
1. Power-Taste
2. USB-C-Klappe
3. LED-Ladestandanzeige

Akku



Beachte: Achte darauf, dass die Klappe verriegelt und wasserdicht ist, indem du sie nach dem Laden fest andrückst.

LED-Ladestandanzeige



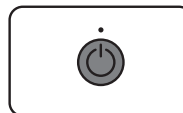
AUFLADEN


Die LED-Leuchte blinkt während des Ladevorgangs grün und erlischt, wenn der Akku vollständig geladen ist. Der komplette Ladevorgang dauert ca. 1,5 Stunden.

AKKUBETRIEBSZEIT



Verwenden des Light Mod

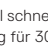


Drücke , um zwischen den drei Beleuchtungsstufen und Strobe zu wechseln.

	Helligkeit	Akkubetriebszeit*
Stufe 1	20 Lumen	6 Stunden
Stufe 2	60 Lumen	2 Stunden
Stufe 3	125 Lumen, 120 Lux auf 1 m	1 Stunde
Strobe		7 Stunden

*Die Akkulaufzeit kann je nach Verwendung und anderen externen Bedingungen variieren.

OVERDRIVE

Drücke zweimal schnell auf , um die Beleuchtung für 30 Sekunden auf 200 Lumen zu erhöhen.

AUSSCHALTEN

Drücke lang auf .

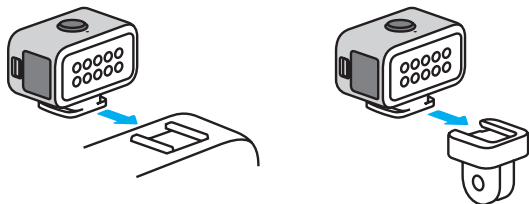
TECHNISCHE DATEN

Farbtemperatur ohne Diffusor: 5.700K.

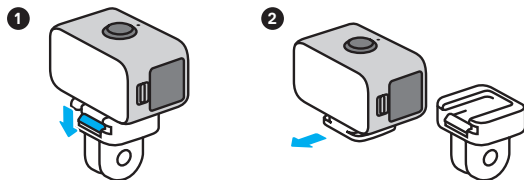
Farbtemperatur mit Diffusor: 5.000K.

CRI: 90+

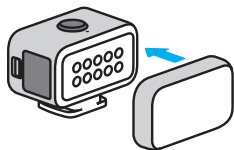
Befestigung



Entfernen des Halterungsadapters



Verwenden des Diffusors

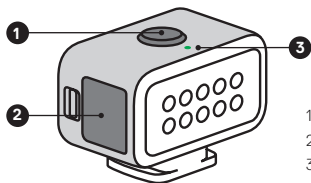


Befestige den Diffusor an der Vorderseite deines Light Mod, um das Licht weicher zu machen.

Mod per la luce

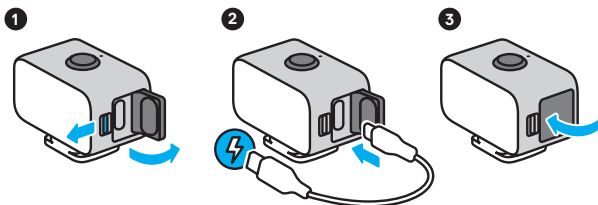
GUIDA PER L'UTENTE

Operazioni di base



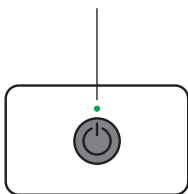
1. Pulsante Accensione
2. Porta USB-C
3. Indicatore di alimentazione a LED

Batteria



Attenzione: assicurati che lo sportello sia bloccato e impermeabile premendo con decisione per chiuderlo dopo la ricarica.

Indicatore di alimentazione a LED



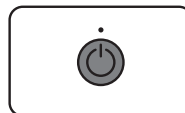
RICARICA


Il LED lampeggia in verde durante la ricarica e si spegne quando la batteria è completamente carica. La ricarica completa della batteria richiede circa 1,5 ore.

DURATA BATTERIA



Utilizzo del mod per la luce

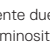


Premi  per selezionare i tre livelli di illuminazione e la luce strobooscopica.

	Luminosità	Durata batteria*
Livello 1	20 lumen	6 ore
Livello 2	60 lumen	2 ore
Livello 3	125 lumen 120 lux a 1 m	1 ora
Strobooscopica		7 ore

*La durata della batteria può variare in base all'utilizzo e ad altre condizioni esterne.

OVERDRIVE

Premi rapidamente due volte  per aumentare la luminosità fino a 200 lumen per 30 secondi.

SPEGNIMENTO

Tieni premuto .

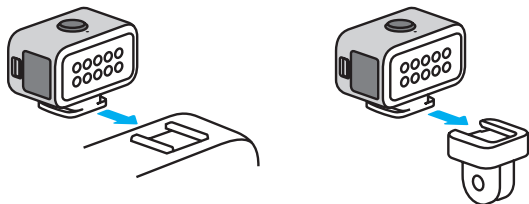
SPECIFICHE TECNICHE

Temperatura del colore senza diffusore: 5.700 K.

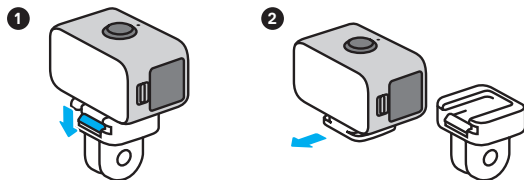
Temperatura del colore con diffusore: 5.000 K.

CRI: 90+

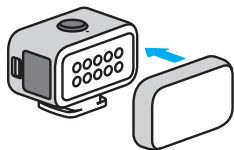
Fissaggio



Rimozione dell'adattatore di montaggio



Utilizzo del diffusore

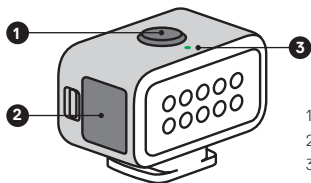


Per ottenere una luce soffusa, collega il diffusore alla parte anteriore del mod per la luce.

Lichtmodule

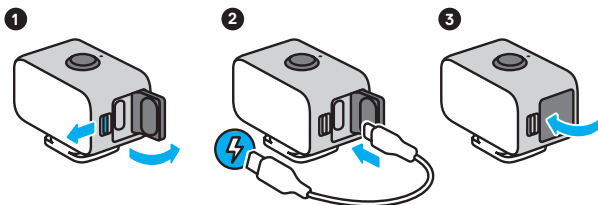
GEBRUIKERSHANDLEIDING

De basisbeginselen



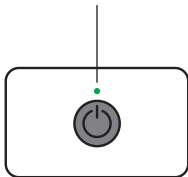
1. Aan-uitknop
2. USB-C-klep
3. Led-stroomindicator

Accu



Let op: zorg ervoor dat de klep is vergrendeld en waterdicht is door deze na het opladen stevig dicht te drukken.

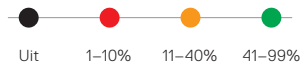
Led-stroomindicator



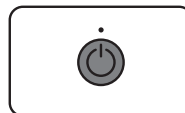
OPLADEN

Het ledlampje knippert groen tijdens het opladen en gaat uit wanneer de accu volledig is opgeladen. Het duurt ongeveer 1,5 uur om de accu volledig op te laden.

ACCUDUUR



De lichtmodule gebruiken



Druk op om tussen de drie verlichtingsniveaus en de stroboscoop te wisselen.

	Helderheid	Accu duur*
Niveau 1	20 lumen	6 uur
Niveau 2	60 lumen	2 uur
Niveau 3	125 lumen 120 lux @1m	1 uur
Stroboscoop		7 uur

*De accu duur is afhankelijk van het gebruik en andere externe omstandigheden.

OVERDRIVE

Druk snel twee keer op om de verlichting 30 seconden lang tot 200 lumen te verhogen.

UITSCHAKELEN

Houd ingedrukt.

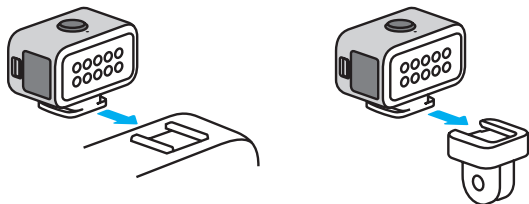
TECHNISCHE SPECIFICATIES

Kleurtemperatuur zonder diffuser:
5700K.

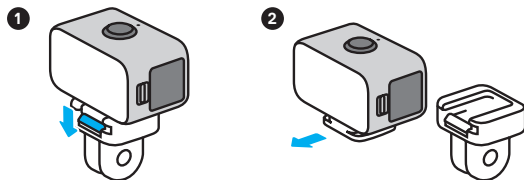
Kleurtemperatuur met diffuser:
5000K.

CRI: 90+

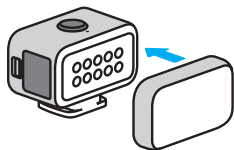
Bevestigen



De bevestigingsadapter verwijderen



De diffuser gebruiken



Bevestig de diffuser aan de voorzijde van de lichtmodule om het licht te verzachten.

Visit **gopro.com** for more information

© 2019 GoPro, Inc. All rights reserved. MODEL/MODELO/型號: JBPM1

130-29677-000 REVA