

# Light Mod

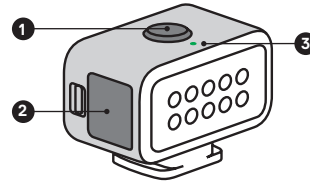
---

USER GUIDE



## The Basics

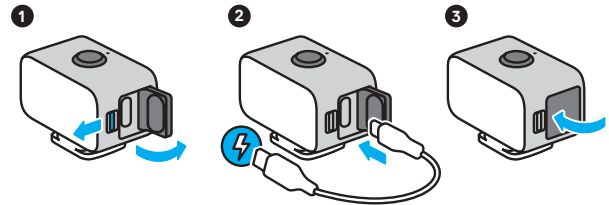
---



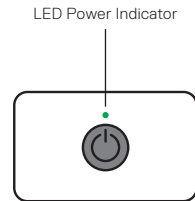
1. Power Button
2. USB-C Door
3. LED Power Indicator

## Battery

---



*Heads Up:* Be sure that the door is locked and waterproof by firmly pressing it shut after charging.



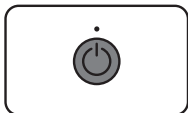
### CHARGING

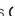
The LED will pulse green when charging and turn off when the battery is fully charged. It takes about 1.5 hours to fully charge the battery.

### BATTERY LIFE



## Using Your Light Mod




Press  to cycle through the three levels of illumination and the strobe.

	Brightness	Battery Life*
Level 1	20 lumens	6 hours
Level 2	60 lumens	2 hours
Level 3	125 lumens 120 lux @1m	1 hour
Strobe		7 hours

\*Battery life may vary based on usage and other external conditions.

### OVERDRIVE

Quickly double press  to boost illumination to 200 lumens for 30 seconds.

### POWERING OFF

Press and hold .

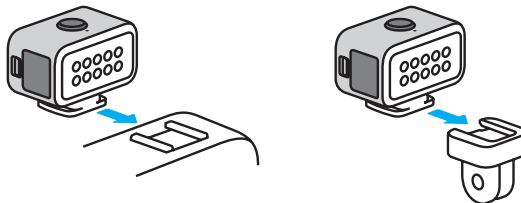
### TECH SPECS

Color temperature without diffuser: 5700K.

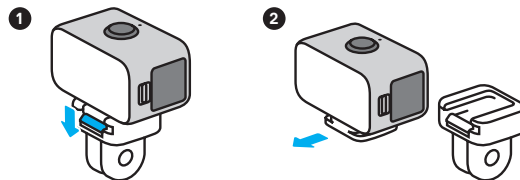
Color temperature with diffuser: 5000K.

CRI: 90+

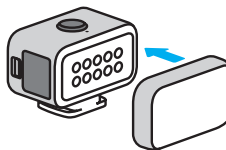
## Mounting



## Removing the Mount Adapter



## Using the Diffuser



Attach the diffuser to the front of your Light Mod to soften the light.

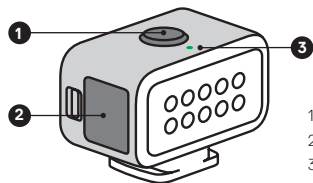
## Module d'éclairage

---

MANUEL DE L'UTILISATEUR

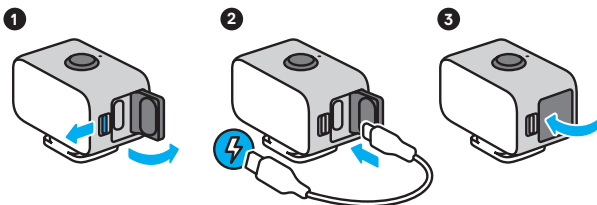


## L'essentiel



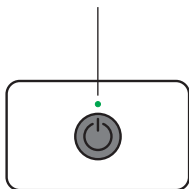
1. Bouton d'alimentation
2. Porte USB-C
3. Témoin d'alimentation à DEL

## Pile



**Attention :** Après la charge, assurez-vous d'appuyer fermement sur la porte pour qu'elle soit verrouillée et étanche.

Témoin d'alimentation à DEL



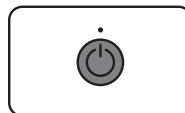
### CHARGE


Le témoin à DEL clignote en vert pendant la charge et s'éteint lorsque la pile est entièrement chargée. Pour charger entièrement la pile, il faut compter environ une heure et demie.

### AUTONOMIE DE LA PILE



## Utiliser le module d'éclairage

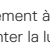


Appuyez sur  pour accéder aux trois degrés de luminosité et au stroboscope.

	Luminosité	Autonomie de la pile*
Degré de luminosité 1	20 lumens	6 heures
Degré de luminosité 2	60 lumens	2 heures
Degré de luminosité 3	125 lumens 120 lux à 1 m	1 heure
Stroboscope		7 heures

\* L'autonomie de la pile peut varier en fonction de l'utilisation et d'autres conditions externes.

### SURMULTIPLICATION

Appuyez rapidement à deux reprises sur  pour augmenter la luminosité jusqu'à 200 lumens pendant 30 secondes.

### MISE HORS TENSION

Maintenez le bouton  enfoncé.

### SPÉCIFICATIONS TECHNIQUES

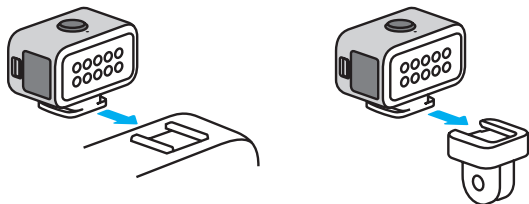
Température de couleur sans diffuseur : 5 700 K

Température de couleurs avec diffuseur : 5 000 K

IRC : 90+

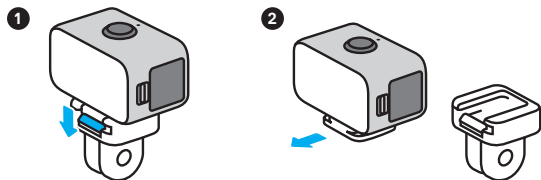
## Fixation

---



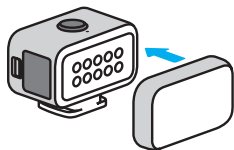
## Retirer l'adaptateur de fixation

---



## Utiliser le diffuseur

---



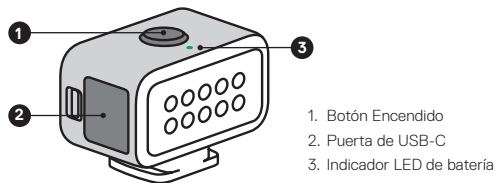
Fixez le diffuseur à l'avant de votre module d'éclairage pour adoucir la lumière.

## Accesorio de foco

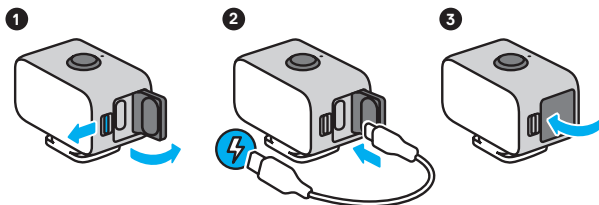
---

GUÍA DE USUARIO

## Funciones básicas

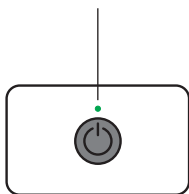


## Batería



**Importante:** Asegúrate de que la puerta esté bien cerrada y sea sumergible presionándola firmemente después de la carga.

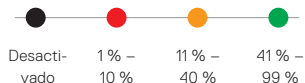
Indicador LED de batería



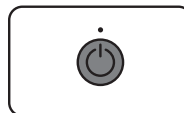
### CARGA

El indicador LED parpadeará de color verde durante la carga y se apagará cuando la batería esté completamente cargada. La carga completa de la batería demora aproximadamente 1,5 horas.

### DURACIÓN DE LA BATERÍA



## Uso del Accesorio de foco



Presiona para cambiar entre los tres niveles de iluminación y la luz estroboscópica.

	Brillo	Duración de la batería*
Nivel 1	20 lúmenes	6 horas
Nivel 2	60 lúmenes	2 horas
Nivel 3	125 lúmenes 120 lux a 1 m	1 hora
Luz estroboscópica		7 horas

\* La duración de la batería puede variar según el uso y otras condiciones externas.

### SOBREMARCHA

Presiona rápidamente 2 veces para aumentar la iluminación a 200 lúmenes durante 30 segundos.

### APAGADO

Mantén presionado .

### ESPECIFICACIONES TÉCNICAS

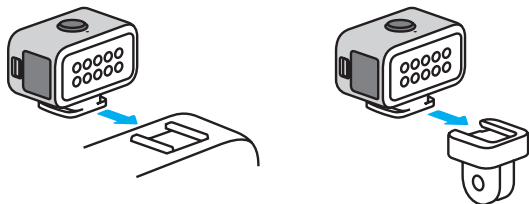
Temperatura del color sin difusor: 5700K.

Temperatura del color con difusor: 5000K.

CRI: 90+

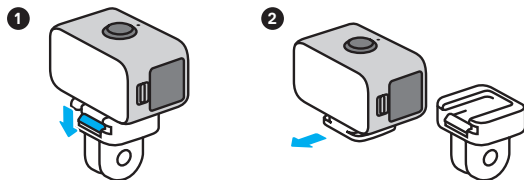
## Montaje

---



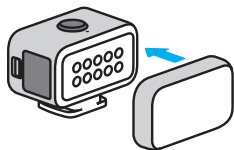
## Extracción del adaptador de montaje

---



## Uso del difusor

---



Fija el difusor en la parte frontal del Accesorio de foco para suavizar la luz.

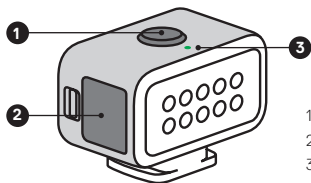
## Módulo de iluminação

---

GUIA DO USUÁRIO

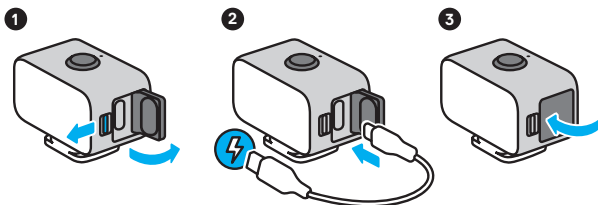


## Instruções básicas



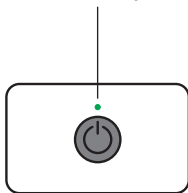
1. Botão Liga/desliga
2. Porta USB-C
3. Indicador de energia LED

## Bateria



Atenção: após o carregamento, pressione bem a porta para garantir que esteja travada e à prova d'água.

Indicador de energia LED



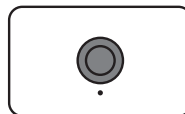
### CARREGAMENTO

Durante o carregamento, o LED piscará na cor verde e desligará quando a bateria estiver totalmente carregada. O carregamento total da bateria leva cerca de uma hora e meia.

### DURAÇÃO DA BATERIA



## Usando o Módulo de iluminação



Pressione para alternar entre três níveis de iluminação e o estrobo.

	Brilho	Duração da bateria*
Nível 1	20 lúmens	6 horas
Nível 2	60 lúmens	2 horas
Nível 3	125 lúmens 120 lux a 1 m	1 hora
Estrobo		7 horas

\*O tempo de duração da bateria pode variar de acordo com o uso e com outras condições externas.

### OVERDRIVE

Pressione duas vezes rapidamente para intensificar a iluminação para 200 lúmens durante 30 segundos.

### DESLIGAR

Pressione e segure .

### ESPECIFICAÇÕES TÉCNICAS

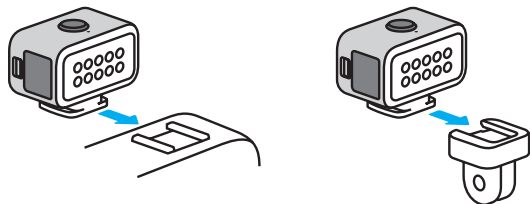
Temperatura de cor sem o difusor: 5.700K.

Temperatura de cor com o difusor: 5000K.

CRI: 90+

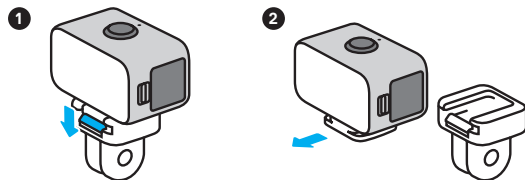
## Montagem

---



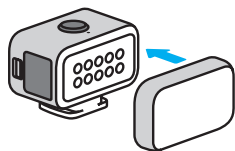
## Remover o adaptador de montagem

---



## Usar o difusor

---



Encaixe o difusor à parte frontal do Módulo de iluminação para amenizar a iluminação.

Visit **gopro.com** for more information

© 2019 GoPro, Inc. All rights reserved. MODEL/MODELO/型號: JBPM1

130-29432-000 REVA